

# Sol-O-matic®



## ALL NEW! Custom Bulkheads

Custom built to your specifications; we can accommodate different modular machine arrangements, designs, as well as codes and regulations. Our frame is constructed of high quality square tubing for strength and durability, and the top and side panels snap on and off for easy access to the plumbing and electrical system. Available in all of our standard colors. Special colors available upon request. Please fax floor plans and specs for quotes.

FAX 713-644-8490

visit us on the web at -

**[www.solomatic.com](http://www.solomatic.com)**

**or call 1-800-633-6718**

# Sol-O-matic<sup>®</sup>

## Custom Bulkheads

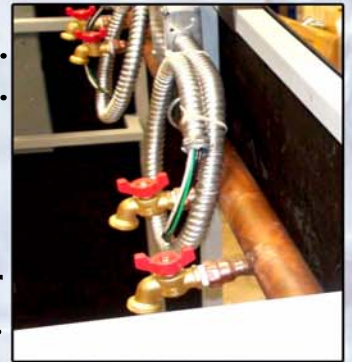
*Quality and Durability Meet Style and Innovation*



**1" square tube 16 gauge rigid steel frame.  
1 1/2" hard copper water lines.**

**4" schedule 40 PVC drain  
built to plumbing codes.**

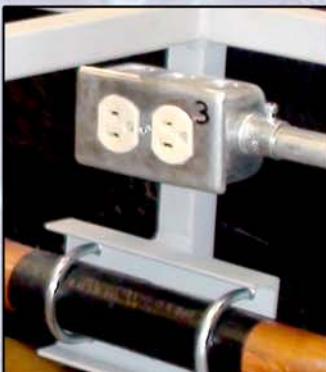
**Standard hose bibs or  
optional ball valves.**



**Available in high pressure laminate over  
fiberglass in all Solomatic standard colors.**

**Slip on side panels for easy  
removal and maintenance.**

**Accommodates different modular  
machine arrangements and designs.**



**Vertically or horizontally  
mounted load centers.**

**Single or three phase,  
electrically wired to code.**

**Locking door panel optional  
for vertically mounted load centers.**



Please fax floor plans and specs for quotes. FAX 713-644-8490

visit us on the web at -

**www.solomatic.com**

**or call 1-800-633-6718**