

Speed Queen®

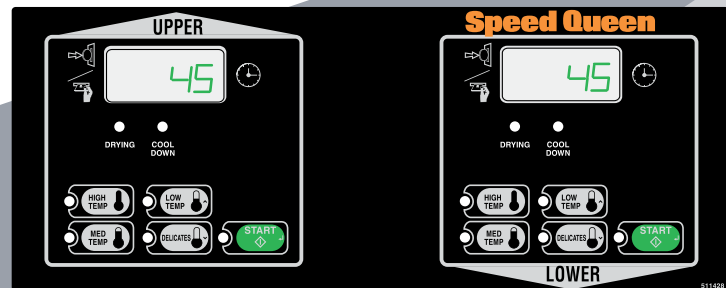
Multi-Housing

Commercial Heavy Duty
Stack Dryer

Micro Display Control
SSET17 (elec)
SSGT19 (gas)

Description

- Four heat / cycle selections
- Strong box meter case security
- Factory installed set at 45 minutes
- 1/3 HP motor; 120/60/1 - 15 amp
- Two separate controls allow two dryers in the space of one to operate independently
- Control graphic arrows indicate upper and lower dryer
- Micro-display coin operated control
 - Vend price programmable
 - Time countdown
 - Non-resettable cycle counter
- Touch pad control
 - Sound annunciator
- Factory installed coin drop validator

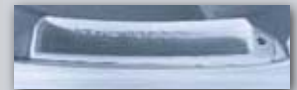


Features & Benefits

- Extra large 7.0 cu. ft., 18 lb. capacity galvanized steel cylinder.
- Wide door opening of 2.06 sq. ft. is the industry largest, offering residents easy loading and unloading.
- 100% serviceable from the front.



- Efficient dryer heating with 25,000 BTU (gas models) and 5,350 watts (electric models).
- High efficiency exhaust blower with superior airflow of 220 cfm.
- Up-front lint filter is easy to clean and secured.
- Space-saving narrow cabinet (26-7/8 wide).



Commercial Built to Last Longer

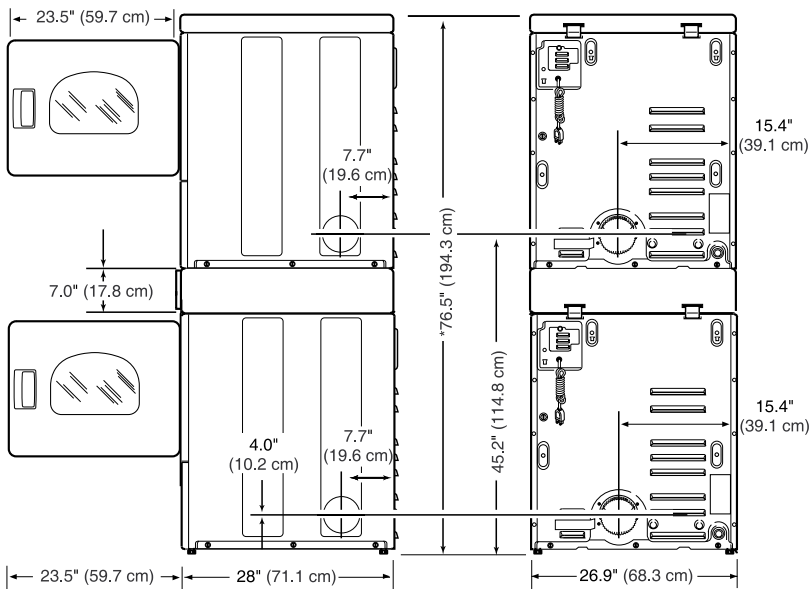
Specifications

Model	SSET17 (elec) SSGT19 (gas)
Width - in. (mm)	26 7/8" (683)
Depth - in. (mm)	28" (711)
Height - in. (mm)	76 5/8" (1,946)
Cylinder Volume (capacity) - cu. ft. (liters)	7.0 (198)
Btu Per Hour	25,000 (6,300 kcal)
Heating Element	5,350 W 240 V (also 4,750 W 208 V)
Type of Gas (Gas models only)	Factory-equipped Natural / Mixed Gas Convertible To LP Gas+
Utility Connections - in. (mm)	Gas: 3/8" NPT (9.5)
Air Outlet Diameter - in. (mm)	4" (102)
Exhaust Airflow	220 (105 liters/sec)
Maximum Exhaust Static Back Pressure	0.6" W.C.
Electrical Specifications Circuit Requirements	Gas 120/60/1 - 15 amp Elec 120/240/60/1 - 30 amp 120/208/60/1 - 30 amp
Colors	White
Net Weight - lbs. (kg)	Gas 275 (125) Elec 265 (120)
Shipping Weight - lbs. (kg)	Gas 290 (132) Elec 280 (127)
Code Standard	Gas CSA Star Elec Underwriters Laboratories

Due to continuous product improvements, design and specifications subject to change without notice. The quality management systems at all Alliance Laundry Systems facilities have been awarded ISO 9001 certification. Features and certifications may vary by model.

At Speed Queen, we're confident that our heavy duty commercial washers and dryers are built better to last longer, that we're offering the following limited warranty to prove it. (+Parts only. Labor not included. See Speed Queen Warranty Bond for specifics.)

- **Through three years+**
 - a. Any part of the washer, single and stack dryer or stack washer/dryer.
- **Through five years+**
 - a. Top load washer transmission assembly.
 - b. Base and cabinet assembly including top, lid and door, against rust from inside out.
- **Life of product-**
 - a. Stainless steel wash tub (top load washer) or stainless steel inner cylinder (front load washer).



Temperature Selection	
Temperature	Setting
Delicate	115°
Low	145°
Medium	155°
High	160°

